

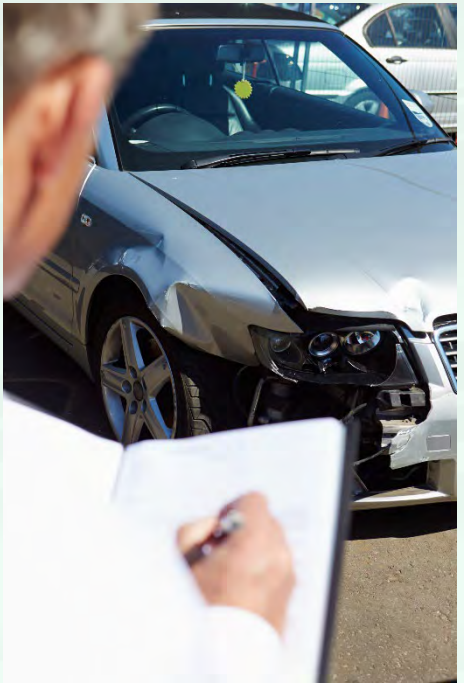


 **MODERN** DISTRIBUTING
Exclusive Distributing
6424 S 3rd Line Road
La Porte Indiana 46350
866-228-6528

Gleam Automotive Finish

Quality First- Everything you need for the refinishing industry

Cleaners & Degreasers	1
Epoxy Sealers	2
Urethane Sealers	3
1K Sealers	4
Waterproof Fiberglass	5
Body Filler	6
Urethane Primer	7-8
Lacquer Primer	9-10
Factory Packs	11-12
Gleam Supreme Factory Packs	13-14
Gleam Color Plus Paint System	15-16
Made in Europe Clear Coats	17-18
Made in USA Clear Coats	19-20
Specialty Coatings	21-22
Base Coat Reducer	23
Lacquer Thinners	24



Gleam Color Plus Paint System Offers the Following:

- Great Color Match**
- Great Coverage**
- Great Product line up**
- Great Price**

**Please visit us on the web at:
www.gleamautomotivefinish.com**





GLM-100 TRUE BLUE PAINT GUN CLEANER

GLM-100 True Blue Paint Gun Cleaner is a urethane grade industrial solvent, used in automatic spray gun cleaning devices. This extra strong, fast acting cleaner has double the active solvent found in lacquer thinners. GLM-100 evaporates at a slower rate, giving off less fumes while lasting longer. This rich solvent helps preserve equipment pump and filters, with its non-corrosive and non-coagulating formula. Available in quarts, gallons, 5 gallons and 55 gallons.



GLM-999 ADHESIVE REMOVER

GLM-999 Adhesive Remover is an aggressive cleaning solvent, used to remove adhesive residue and glue from painted automobile surfaces. Will not harm the paint. Available in quarts, gallons, 5 gallons and 55 gallons.



GLM-800 PRE-PAINT CLEANER

GLM-800 Pre-Paint Cleaner is a cleaning solvent used to remove wax, silicone, sanding residues, and other unwanted contaminants before painting begins. GLM-800 should be used prior to painting to reduce dirt and other contaminants found in the final finish. Available in quarts, gallons, 5 gallons and 55 gallons.



GLM-900 WAX & GREASE REMOVER

GLM-900 Wax & Grease Remover is a cleaning solvent used to remove road grime and tar from vehicles before surface preparation begins. GLM-900 removes waxes, silicones and other unwanted contaminations found on surfaces prior to sanding. Available in quarts, gallons, 5 gallons and 55 gallons.



GLM-2701 EPOXY SEALER WHITE

Epoxy Primer/Sealer White is a premium quality, corrosion resistant, two component isocyanate free primer and sealer. This product offers superior adhesion to properly prepared bare metal, fiberglass, and aluminum surfaces. GLM-2701 Epoxy Primer/Sealer White is a lead and chromate free formula, that exhibits excellent drying and color holdout characteristics with no shrinkage. This product can be reduced to be used as a corrosion resistant sealer in a wet on wet application. This 1:1 sealer must be activated with GLM-2700 activator. Available in quarts also.



GLM-2704 EPOXY SEALER GREY

Epoxy Primer/Sealer Grey is a premium quality, corrosion resistant, two component isocyanate free primer and sealer. This product offers superior adhesion to properly prepared bare metal, fiberglass, and aluminum surfaces. GLM-2704 Epoxy Primer/Sealer Grey is a lead and chromate free formula, that exhibits excellent drying and color holdout characteristics with no shrinkage. This product can be reduced to be used as a corrosion resistant sealer in a wet on wet application. This 1:1 sealer must be activated with GLM-2700 activator. Available in quarts also.



GLM-2707 EPOXY SEALER BLACK

Epoxy Primer/Sealer Black is a premium quality, corrosion resistant, two component isocyanate free primer and sealer. This product offers superior adhesion to properly prepared bare metal, fiberglass, and aluminum surfaces. GLM-2707 Epoxy Primer/Sealer Black is a lead and chromate free formula, that exhibits excellent drying and color holdout characteristics with no shrinkage. This product can be reduced to be used as a corrosion resistant sealer in a wet on wet application. This 1:1 sealer must be activated with GLM-2700 activator. Available in quarts also.



GLM-2700 EPOXY SEALER ACTIVATOR

Epoxy Sealer Activator is a premium quality, corrosion resistant, two component isocyanate free primer and sealer. This product offers superior adhesion to properly prepared bare metal, fiberglass, and aluminum surfaces. GLM-2700 Epoxy Sealer Activator is a lead and chromate free formula, that exhibits excellent drying and color holdout characteristics with no shrinkage. This product can be reduced to be used as a corrosion resistant sealer in a wet on wet application. This 1:1 sealer must be activated with GLM-2700 activator. Available in quarts also.



GLM-40W URETHANE SEALER WHITE

GLM-40W Urethane Sealer White is a premium quality, two component wet on wet white sealer. This product offers good adhesion to properly prepared bare metal surfaces and properly prepared automotive plastics. GLM-40W Urethane Sealer can be used over factory e-coat metal parts and previously painted surfaces. This 4:1:1 sealer must be activated with PC40A activator, and reduced with PC870 reducer. Available in quarts also.



GLM-40G URETHANE SEALER GREY

GLM-40G Urethane Sealer Grey is a premium quality, two component wet on wet grey sealer. This product offers good adhesion to properly prepared bare metal surfaces and properly prepared automotive plastics. GLM-40G Urethane Sealer can be used over factory e-coat metal parts and previously painted surfaces. This 4:1:1 sealer must be activated with PC40A activator, and reduced with PC870 reducer. Available in quarts also.



GLM-40B URETHANE SEALER BLACK

GLM-40B Urethane Sealer Black is a premium quality, two component wet on wet black sealer. This product offers good adhesion to properly prepared bare metal surfaces and properly prepared automotive plastics. GLM-40B Urethane Sealer can be used over factory e-coat metal parts and previously painted surfaces. This 4:1:1 sealer must be activated with PC40A activator, and reduced with PC870 reducer. Available in quarts also.



GLM-40A URETHANE SEALER ACTIVATOR

GLM-40A Urethane Sealer Activator is a premium quality, two component wet on wet sealer activator. This product offers good adhesion to properly prepared bare metal surfaces and properly prepared automotive plastics. GLM-40A Urethane Sealer Activator can be used over factory e-coat metal parts and previously painted surfaces. This 4:1:1 activator must be used with PC40W, PC40G, or PC40B Sealer, and reduced with PC870 reducer. Available in half pints also.



1504 1K SPEED SEALER GREY

1K Speed Sealer Grey is a ready to spray one component sealer used to provide uniform color match under a base coat application. GLM15041K Speed Sealer Grey provides a smooth finish and optimal hiding so that base coat coverage may be applied faster with a fewer coats.





GLM-205

GREEN SHORT HAIR FIBERGLASS FILLER

GLM-205 Green Short Hair Fiberglass Filler is a waterproof, reinforced fiber filler used to repair over rust and holes up to 1/2" thick that has been properly grinded and sanded, Sands fast and provides strength, durability and a good foundation for GLM-225 G-Grip Body Filler.



GLM-210

GOLD SHORT HAIR FIBERGLASS FILLER

GLM-210 Gold Short Hair Fiberglass Filler is a waterproof, reinforced fiber filler used to repair over rust and holes up to 1/2" thick that has been properly grinded and sanded, Sands fast and provides strength, durability and a good foundation for GLM-250 Gold Fast Sanding Body Filler.



GLM-205QT

GREEN SHORT HAIR FIBERGLASS FILLER

GLM-205QT Green Short Hair Fiberglass Filler is a waterproof, reinforced fiber filler used to repair over rust and holes up to 1/2" thick that has been properly grinded and sanded, Sands fast and provides strength, durability and a good foundation for GLM-225 G-Grip Body Filler.



GLM-210QT

GOLD SHORT HAIR FIBERGLASS FILLER

GLM-210QT Gold Short Hair Fiberglass Filler is a waterproof, reinforced fiber filler used to repair over rust and holes up to 1/2" thick that has been properly grinded and sanded, Sands fast and provides strength, durability and a good foundation for GLM-250 Gold Fast Sanding Body Filler.



GLM-225

G-Grip Filler

GLM-225 G-Grip Body Filler is a fast drying, easy sanding, light weight body filler. G-Grip Body Filler provides easy sanding with a tack free non clog formula that wont clog your sandpaper. Easy to apply without sagging. Provides a smooth finish every time before priming, sealing and top coating.



GLM-250

GOLD FAST SANDING BODY FILLER

GLM-250 Gold Fast Sanding Body Filler is a fast drying, easy sanding, light weight body filler. Gold Fast Sanding Body Filler provides easy sanding with a tack free non clog formula that wont clog your sandpaper. Easy to apply without sagging. Provides a smooth finish every time before priming, sealing and top coating.





GLM-2630

DTM SPEED URETHANE PRIMER / SEALER GREY

GLM-2630 DTM Direct To Metal Urethane Primer Grey is a premium quality, high build, two component direct to metal grey primer surfacer. This ultra high build primer covers deep sand scratches that can be applied by roller or sprayed. Primer can be applied directly over bare metal, offering outstanding adhesion and easy sanding, with no shrinkage. This 4:1 Primer must be activated with GLM-2600A Activator. Available in quarts also.



GLM-2635

DTM (DIRECT TO METAL) URETHANE PRIMER/SEALER GREY

GLM-2635 DTM Direct To Metal Urethane Primer Grey is a premium quality, high build, two component direct to metal grey primer surfacer. This ultra high build primer covers deep sand scratches that can be applied by roller or sprayed. Primer can be applied directly over bare metal, offering outstanding adhesion and easy sanding, with no shrinkage. This 4:1 Primer must be activated with GLM-2600A Activator. Available in quarts also.



GLM-2638

2K HEAVY FILL URETHANE PRIMER

GLM-2638 2K Heavy Fill Urethane Primer Grey is a high solids primer with superior filling capabilities. This product offers excellent color holdout under all urethane finishes. GLM-2638 Primer offers fast drying, easy sanding, wet or dry without sandpaper loading. This outstanding primer offers excellent adhesion, outstanding fill and build capabilities with easy sanding and no shrinkage. This product may be tinted with basecoat toners and used as a wet on wet sealer. This 4:1 Primer must be activated with GLM-2600A Activator. Available in quarts also.



GLM-35A, PC36A, PC38A

URETHANE PRIMER ACTIVATORS

GLM-35A, 36A, and 38A Urethane Primer Activators are formulated for Painters Choice high solids urethane primers. These high solid urethane primers offer superior filling capabilities. These products offer excellent color holdout under all urethane finishes. Available in half pints also.



GLM-2000

2K URETHANE HIGH BUILD PRIMER

GLM-2000 2K Urethane High Build Primer Grey is a high solids primer with superior filling capabilities. This product offers excellent color holdout under all urethane finishes. GLM-2000 2K Urethane High Build Primer offers fast drying, easy sanding, wet or dry without sandpaper loading. This outstanding primer offers excellent adhesion, outstanding fill and build capabilities with easy sanding and no shrinkage. AVAILABLE IN YELLOW PRIMER GLM2100





GLM-1030

HIGH BUILD LACQUER PRIMER - GREY

GLM-1030 High Build Lacquer Primer Grey is a fast drying, high build, easy sanding primer. This product offers excellent filling capabilities with no shrinkage and good color holdout that will insure a good color match. GLM-1030 High Build Lacquer Primer Grey offers excellent adhesion with fast dry and sand times, which are sure to improve shop productivity. GLM-1030 must be reduced with GLM-700 series lacquer thinners. Reduce with appropriate thinner temperature according to shop temperature. Available in quarts also.



GLM-1032

HIGH BUILD LACQUER PRIMER - GREY

GLM-1032 High Build Lacquer Primer Grey is a fast drying, high build, easy sanding primer. This product offers excellent filling capabilities with no shrinkage and good color holdout that will insure a good color match. GLM-1032 High Build Lacquer Primer Grey offers excellent adhesion with fast dry and sand times, which are sure to improve shop productivity. GLM-1030 must be reduced with GLM-700 series lacquer thinners. Reduce with appropriate thinner temperature according to shop temperature. Available in quarts also.



GLM-1033

HIGH BUILD LACQUER PRIMER - GREY

GLM-1033 High Build Lacquer Primer Grey is a fast drying, high build, easy sanding primer. This product offers excellent filling capabilities with no shrinkage and good color holdout that will insure a good color match. GLM-1030 High Build Lacquer Primer Grey offers excellent adhesion with fast dry and sand times, which are sure to improve shop productivity. GLM-1033 must be reduced with GLM-700 series lacquer thinners. Reduce with appropriate thinner temperature according to shop temperature. Available in quarts also.



GLM-1034

HIGH BUILD LACQUER PRIMER - GREY

GLM-1034 High Build Lacquer Primer Grey is a fast drying, high build, easy sanding primer. This product offers excellent filling capabilities with no shrinkage and good color holdout that will insure a good color match. GLM-1034 High Build Lacquer Primer Grey offers excellent adhesion with fast dry and sand times, which are sure to improve shop productivity. GLM-1030 must be reduced with GLM-700 series lacquer thinners. Reduce with appropriate thinner temperature according to shop temperature. Available in quarts also.



GLM-131

PROFESSIONAL GRADE LACQUER PRIMER GREY

GLM-131 Professional Grade Lacquer Primer Grey is a fast drying, high build, easy sanding primer. This product offers excellent filling capabilities with no shrinkage and good color holdout that will insure a good color match. GLM-131 Professional Grade Lacquer Primer offers excellent adhesion with fast dry and sand times, which are sure to improve shop productivity. This 1:1 product must be reduced with GLM-700 Lacquer Thinner.





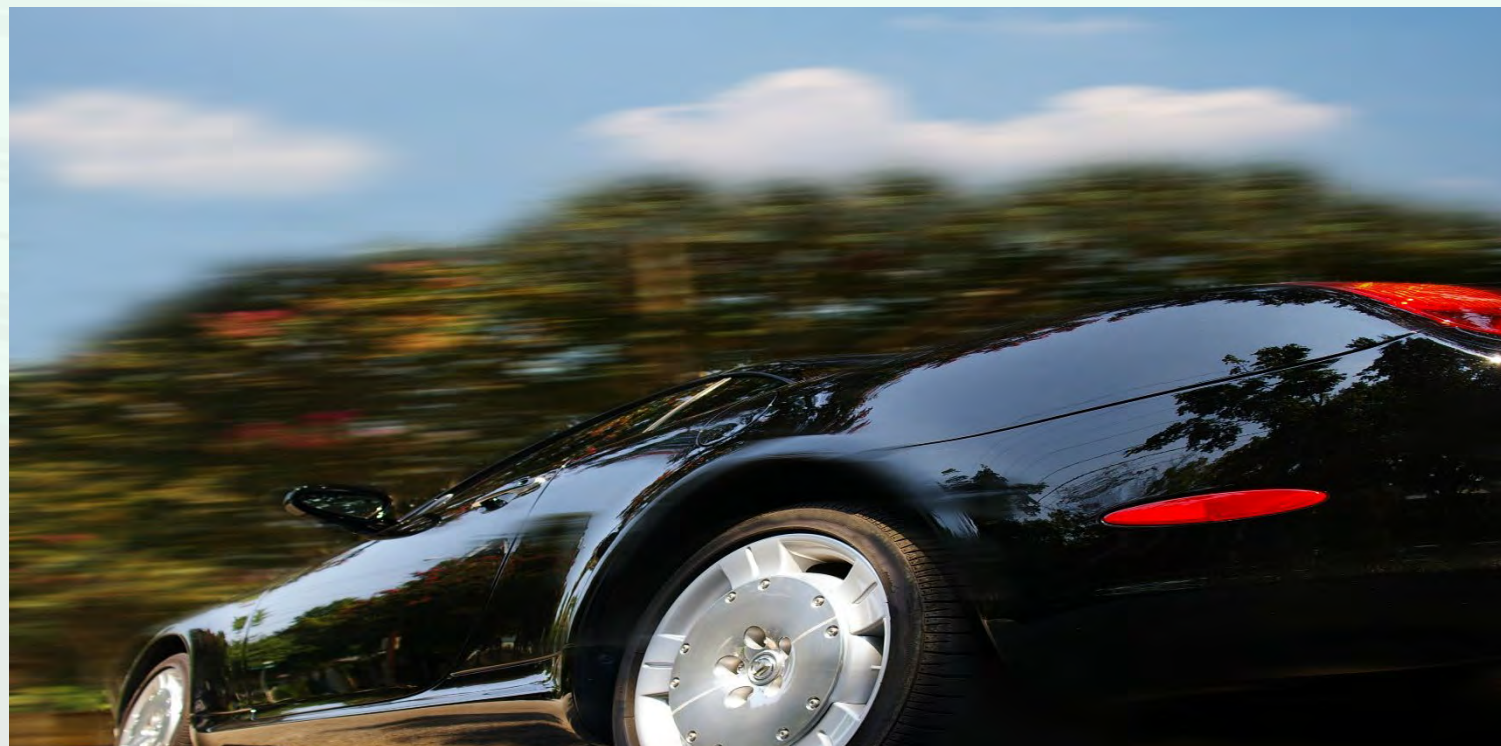
GLM-392 DEEP BLACK BASE COAT

GLM-392 Deep Black Base Coat is a true rich deep black paint that offers fast hiding and rapid coverage. This Deep Black Base Coat must be reduced with Glean-870 Base Coat Reducer Medium at a mix ratio of 1:1 in 70 degree temperatures. Reduce with appropriate reducer temperature according to shop temperature. Available in quarts also.



GLM-50 ALUMINUM BASE COAT

GLM-50 Medium Aluminum Base Coat is a popular factory aluminum or silver metallic color that offers fast hiding and rapid coverage. GLM-50 Medium Aluminum Base Coat must be reduced with Glean 870 Base Coat Reducer Medium at a mix ratio of 1:1 in 70 degree temperatures. Reduce with appropriate reducer temperature according to shop temperature. Available in quarts also.



GLM-12 WHITE BASE COAT

GLM-12 White Base Coat is a true factory white paint that offers fast hiding and rapid coverage. This white base Coat must be reduced with Glean 870 Base Coat Reducer Medium at a mix ratio of 1:1 in 70 degree temperatures. Reduce with appropriate reducer temperature according to shop temperature. Available in quarts also.



GLM-659 RED BASE COAT

GLM-659 Red Base Coat is a popular factory red color that offers fast hiding and rapid coverage. This Red Base Coat is based off of GM Victory Red. GLM-659 Red Base Coat must be reduced with Glean 870 Base Coat Reducer Medium at a mix ratio of 1:1 in 70 degree temperatures. Available in quarts also.



Gleam Factory Pack Ready Mix 1:1

Gleam Supreme Factory Packs are used for complete paint jobs or for fleet work when the same colors are frequently used. Gleam Supreme Factory Packs offer fast coverage and easy hiding. Must be reduced with Gleam Base Coat Reducers at a mix ratio of 1:1



Make	Code	Description	Make	Code	Description
Chrysler	PAU	Granite Crystal Metallic	Chrysler	PBM	Ocean Blue
Chrysler	PBU	Granite Crystal Metallic	Chrysler	PCL	Blue Streak
Chrysler	PRV	Dark Garnet Red Pearl	Chrysler	PDN	Ceramic Grey
Chrysler	PS2	Bright Silver Metallic	Chrysler	PFS	Cashmere
Chrysler	PSC	Billet Silver Metallic	Chrysler	PRM	Redline
Chrysler	PW7	Bright White	Chrysler	PRP	Deep Cherry Red
Chrysler	PXR	Brilliant Black Crystal Pearl	Chrysler	PRY	Redline
Chrysler	PAR	Maximum Steel			
Chrysler	PBJ	Hydro Blue	Toyota	3R3	Red Pearl Metallic
Ford	300	Alpine White	Ford	R569M	Radiant Red
Ford	1H1	Grey	Ford	RR	Ruby Red Pearl Metallic
Ford	1H2	Dk. Steel	Ford	UG/1	White Platinum Tricoat Base
Ford	FT	Blue Diamond	Ford	UG/2	White Platinum Tricoat Base
Ford	H2Q	Venetian Red	Ford	UJ	Sterling Grey Metallic
Ford	J4	Deep Impact Blue	Ford	UM	Agate Black
Ford	J7	Magnetic Metallic	Ford	UN	Steel Blue
Ford	N6	Blue Lightning Pearl Metallic	Ford	UX	Ingot Silver Metallic
Ford	NAH	Radiant Red	Ford	YZ	Oxford White
Ford	PQ	Race Red	Ford	Z9	Blue Candy
GM	WA102V	Champagne Silver	GM	WA410Y	Old Blue Eyes
GM	WA121V	Iridium Grey Metallic	GM	WA434B	Glory Red
GM	WA122V	Berlin Blue	GM	WA441B	Pepper dust
GM	WA130X	Pull-Me Over Red	GM	WA444C	Coppertino
GM	WA139X	Son of a Gun Gray	GM	WA464C	Satin Steel Gray
GM	WA140X	Abalone White Pearl	GM	WA505Q	Crystal Claret Metallic
GM	WA380A	You Drive me Grazy	GM	WA636R	Switchblade Pearl Metallic
GM	WA384A	Black Meet Kettle Metallic	GM	WA637R	Cyber Grey Metallic
GM	WA388A	Blue me Away	GM	WA810T	Ashen Grey Metallic
GM	WA405Y	Crimson Red	GM	WA8624	Olympic White
GM	WA409B	Edible Berries			

15 Shop “Gleam Color Plus” Paint System

PART #	DESCRIPTION	PART	DESCRIPTION
B111	WHITE	B924	RED GOLD METALLIC
B112GAL	WHITE	B925	BROWN RED PEARL
B227	LIGHT YELLOW	B926	WHITE PEARL EXTRA FINE
B235	BRIGHT YELLOW	B927	PEARL WHITE FINE
B259	ORANGE YELLOW TRANSPARENT	B929	FINE GREEN PEARL
B263	LIGHT YELLOW OXIDE	B934	YELLOW GOLD METALLIC
B280	RED YELLOW	B935	YELLOW PEARL
B330	DARK ORANGE	B936	RED PEARL
B348	ORANGE RED TRANSPARENT	B937	GRAPHITE
B358	RED MAROON TRANSPARENT	B939	RED GREEN PEARL
B389	BRILLIANT RED	B942	FINE RED PEARL
B401	VIOLET TRANSPARENT	B950	METALLIC ADDITIVE
B406	VIOLET RED TRANSPARENT	B957	SCARLET RED GREEN
B408	BRIGHT MAROON TRANSPARENT	B958	BLUISH GREEN PEARL
B410	RED SEMI TRANSPARENT	B959	FINE YELLOW PEARL
B432	RED TRANSPARENT	B960	GREEN PEARL
B500	BASE COAT BINDER	B961	FINE BLUE PEARL
B510	BRIGHT BLUE TRANSPARENT	B962	VIOLET PEARL
B511	BLUE VIOLET TRANSPARENT	B964	BLUE GREEN PEARL
B512	BLUE TRANSPARENT	B965	GREEN PEARL
B541	DARK BLUE TRANSPARENT	B966	WHITE PEARL
B600	SINGLE STAGE BINDER	B967	YELLOW PEARL
B612	DARK GREEN TRANSPARENT	B968	RED PEARL
B616	GREEN TRANSPARENT	B969	BLUE PEARL
B682	YELLOW GREEN TRANSPARENT	B970	WHITE TRANSPARENT
B712	MIXING BLACK	B973	FINE ALUMINUM
B744GAL	DEEP BLACK	B975	VERY BRILLIANT ALUMINUM COARS
B802	DARK RED OXIDE TRANSPARENT	B983	VERY FINE ALUMINUM
B807	DARK YELLOW OXIDE TRANSPARENT	B985GAL	ALUMINUM MEDIUM PEARL
B840	RED OXIDE	B990GAL	MIXING MID COARSE VERY BRILLIAN
B900	BINDER	B993	ALUMINUM EXTRA COARSE
B900GG	STELLAR GREEN XIRALLIC® PEARL	B994	ALUMINUM VERY EXTRA COARSE
B900XB	GALAXY BLUE XIRALLIC® PEARL		
B900XG	GOLD SUNBEAM XIRALLIC® PEARL		
B900XR	RADIANT RED XIRALLIC® PEARL		
B900XS	CRYSTAL SILVER XIRALLIC® PEARL		



Store “Gleam Color Plus” Paint System16



**GLM-3000****ULTIMATE CLEAR COAT**

3000 Ultimate Clear Coat is a universal high quality, fast drying, urethane clear coat formulated for ease of use. This product offers easy application, excellent flow, and high gloss. User friendly and easy to buff, make this clear a great choice for easy application with great results .. This 4:1 Clear coat must be activated with 3070, 3080, or 3090 activators.

**GLM-4000****GLAMOUR CLEAR COAT**

4000 Glamour Clear Coat produces a finish that competes with the best automotive clear coats on the market today. Exceptional clarity, gloss, and depth of image are just a few of the features this product delivers. GLM-4000 achieves excellent performance over all base coat systems. This product is recommended as a two coat application and has excellent flow and self leveling properties. This 4:1 clear coat must be used with GLM4000AF, GLM4000AN, OR GLM4000AS activators.

**GLM-3500****PROFESSIONAL GRADE PREMIUM VELOCITY CLEAR COAT**

3500 Professional Grade Premium Velocity Clear Coat delivers a finish with exceptional clarity for the best possible color match. This quality product has been formulated to provide ease of use with excellent flow and leveling properties. 3500 Professional Grade Premium Velocity Clear Coat provides high gloss, depth of image and long term durability characteristics for those looking for extra protection against the harsh environment. This 2:1 clear coat must be activated with 3500AF, 3500AN, and 3500AS Activators.

**GLM-4500****PROFESSIONAL GRADE HIGH GLOSS CLEAR COAT**

4500 Professional Grade High Gloss Clear Coat is a premium high solids clear coat that provides the highest gloss with exceptional clarity, and a depth of image that out performs other clears on the market today. 4500 Professional Grade High Gloss Clear Coat is a premium overall clear coat that should be used when the best possible finish needs to be obtained. This

**GLM-5000****PROFESSIONAL GRADE BASIC CLEAR COAT**

5000 Professional Grade Basic Clear coat is a high quality, fast drying, urethane clear coat formulated for fast production. This product offers excellent flow, high gloss, depth of image, with fast tack free times. User friendly and easy to buff, make this clear a great choice for shops that demand fast paced production. This 2:1 Clear coat must be activated

**GLM-7500****PROFESSIONAL GRADE CAYENNE CLEAR COAT**

Professional Grade Cayenne Clear Coat is a premium high solids clear coat that provides the highest gloss with exceptional clarity, and a depth of image that out performs other clear coats on the market today. Professional Grade Cayenne Clear Coat is a premium clear coat that should be used when the best possible finish needs to be obtained. This 2:1 clear coat must be activated with GLM7500AN Professional Grade Cayenne Clear Coat Activator



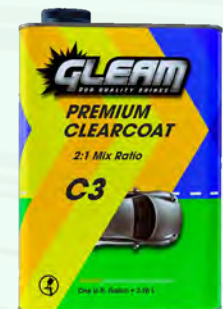
GLM-C1 EUROPEAN CLEAR COAT

GLM-C1 European Clear coat is a premium 3.5VOC high solids clear coat that provides the highest gloss with exceptional clarity, and a depth of image that out performs other clears on the market today. C1 European Clear coat is a premium overall clear coat that should be used when the best possible finish needs to be obtained. This 2:1 clear must be activated with C160, C175, C185, or C195 activators. Available in quarts also.



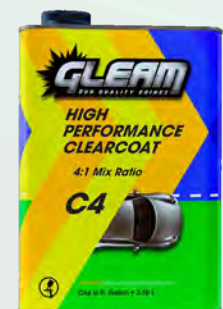
GLM-C2 URETHANE CLEAR COAT

GLM-C2 Urethane Clear coat is a premium 3.5VOC high solids clear coat that provides the highest gloss with exceptional clarity, and a depth of image that out performs other clears on the market today. C2 Urethane Clear coat is a premium overall clear coat that should be used when the best possible finish needs to be obtained. This 2:1 clear must be activated with C260, C275, C285 or C295 Activator. Available in quarts also.



GLM-C3 PREMIUM CLEAR COAT

C3 Premium Clear Coat produces a finish that competes with the best automotive clear coats on the market today. Exceptional clarity, gloss, and depth of image are just a few of the features this product delivers. C3 Premium Clear Coat achieves excellent performance over all base coat systems. This product is recommended as a two coat application and has excellent flow and self leveling properties. This 2:1 clear coat must be activated with C360, C375, C385, or C395 activators. Available in quarts also.



GLM-C4 HIGH PERFORMANCE CLEARCOAT

C4 High Performance Clear coat is a premium 3.5 VOC urethane clear with an easy to use 4:1 mix ratio. This product provides outstanding clarity with excellent gloss retention and long term durability. This 2 coat application clear has been formulated with excellent flow and leveling properties to provide easy application. This product can be used for spot/panel or overall refinishing. This 4:1 clear coat must be activated with C460, C475, C485, C495 activators. Available in quarts also.



GLM-C5 UNIVERSAL CLEAR COAT

C5 Universal Clear coat delivers a finish with exceptional clarity for the best possible color match. This quality product has been formulated to provide ease of use with excellent flow and leveling properties. C5 Universal Clear coat provides high gloss, depth of image and long term durability characteristics for those looking for extra protection against the harsh environment. This 4:1 clear coat must be activated with C560, C575, C585, C595 activators. Available in quarts also.



GLM-C6 PRODUCTION CLEAR COAT

C6 Production Clear Coat is a high quality, fast drying, urethane clear coat formulated for fast production. This product offers excellent flow, high gloss, depth of image, with fast tack free times. This 2 coat clear delivers exceptional clarity with out of dust times as fast as 3 minutes. User friendly and easy to buff, make this clear a great choice for shops that demand fast paced production. This 4:1 Clear coat must be activated with C660, C675, C685, or C695 activators. Available in quarts also.



GLM-C7 URETHANE CLEAR COAT

C7 Urethane Clear Coat is a premium 3.5 voc urethane clear with an easy to use 4:1 mix ratio. This product provides outstanding clarity with excellent gloss retention and long term durability. This 2 coat application clear has been formulated with excellent flow and leveling properties to provide easy application. This product can be used for spot/panel or overall refinishing. This 4:1 clear coat must be activated with C760, C775, C785, or C795 activators. Available in quarts also.



GLM-C8 SPEED CLEAR COAT

C8 Speed Clear coat is a rapid cure clear coat, designed to increase production and cycle time in the shop. This fast drying clear coat can be used on spot and panel repairs, as well as overall applications. C8 Speed Clear Coat offers excellent flow and self leveling properties. Its superior gloss, and increased buff times are sure to increase productivity. This 4:1 clear coat must be activated with C860, C875, C885, or C895 activators. Available in quarts also.



GLMA-840 CLEARCOAT BLENDER

GLMA-840 Clearcoat Blender is a premium clearcoat blender designed to blend automotive clearcoat into a existing finish. This product has an ability to blend new clearcoat into the old clearcoat finish, leaving a seamless and invisible repair. Available in quarts also.



GLM-1801 ADHESION PROMOTER

GLM-1801 Adhesion Promoter dramatically improves adhesion to all types of surfaces. This product insures the adhesion of material applied directly on top. GLM-1801 Adhesion Promoter enhances the adhesion, appearance and durability of all types of finishes. This product must be applied over difficult types of plastics such as TPO and polypropylene to insure proper adhesion. When used properly, this product eliminates sanding of plastic replacement parts. Available in quarts also.



GLMA-7054 FISH EYE ELIMINATOR

Fish Eye Eliminator is an additive for clears and primers, that has been specially formulated to help avoid repair, and prevent fisheyes. GLMA-7054 Fish Eye Eliminator can be used with any two component urethane primer or clearcoat. Use to eliminate fish eyes that occur in catalyzed primer and clearcoat due to unknown contamination..



GLMA-3929 URETHANE ACCELERATOR

Urethane Accelerator is designed to accelerate the curing, dust, tack and tape times of Painters Choice Primers and Clear Coats without sacrificing pot life. When GLMA3929 Urethane Accelerator is used according to the directions, it can save time and money, by improving shop productivity and increasing production.



GLM-B100 UNIVERSAL HIGH SOLIDS BINDER

GLM-B100 Universal High Solids Binder is a universal product that can be mixed with most base coats to extend or create the additional volume of color.



GLM-B600 SIINGLE STAGE BINDER

GLM-B600 Single stage binder is a universal product used to turn automotive base coat paint into single stage paint. The use of this GLM-B600 Single Stage Binder requires an activator to dry the binder. Check with paint manufacturer for mixing instructions.



GLMA-500QT COLOR BLENDER

GLMA-500QT Color Blender is used to provide a uniform foundation prior to applying a base coat finish when blending base coats into adjacent panels. GLMA-500QT Color Blender may tinted with unreduced base coat paint in order to provide



GLM-1404 PLASTIC PRIMER QT

GLM-1404 Plastic Primer is a (RTS) Ready to Spray adhesion primer that dramatically improves adhesion to all types of plastic substrates. This product insures the adhesion of material applied directly on top. GLM-1404 Plastic Primer enhances the adhesion, appearance and durability of all types of finishes.



GLM-860

BASE COAT REDUCER FAST

GLM-860 Base Coat Reducer Fast has been formulated as a universal comparable product to many paint manufacturers Urethane Reducers. GLM-860 Urethane Reducer will improve overall appearance for a smoother basecoat finish and better metallic flake control. This product has been formulated to control cure and flash times as well as improve basecoat and application performance Available in quarts, gallons, 5 gallons and 55 gallons.



GLM-870

BASE COAT REDUCER MEDIUM

GLM-870 GLM-860 Base Coat Reducer Medium has been formulated as a universal comparable product to many paint manufacturers Urethane Reducers. GLM-870 Urethane Reducer will improve overall appearance for a smoother basecoat finish and better metallic flake control. This product has been formulated to control cure and flash times as well as improve basecoat and application performance. Available in quarts, gallons, 5 gallons and 55 gallons.



GLM-885

BASE COAT REDUCER SLOW

GLM-885 Base Coat Reducer Slow has been formulated as a universal comparable product to many paint manufacturers Urethane Reducers. GLM-885 Urethane Reducer will improve overall appearance for a smoother basecoat finish and better metallic flake control. This product has been formulated to control cure and flash times as well as improve basecoat and application performance. Available in quarts, gallons, 5 gallons and 55 gallons.



GLM-895

BASE COAT REDUCER Extra SLOW

GLM-895 Base Coat Reducer Extra Slow has been formulated as a universal comparable product to many paint manufacturers Urethane Reducers. GLM-895 Urethane Reducer will improve overall appearance for a smoother basecoat finish and better metallic flake control. This product has been formulated to control cure and flash times as well as improve basecoat and application performance. Available in quarts, gallons, 5 gallons and 55 gallons.



GLM-700

LACQUER THINNER FAST

GLM-700 Lacquer Thinner is a general purpose, fast drying lacquer thinner, This product is used for thinning lacquer primer when fast dry times are required. GLM-700 offers ideal flow and fast flash times when used in temperatures of 60-70 Fahrenheit. Available in quarts, gallons, 5 gallons and 55 gallons.



GLM-701

LACQUER THINNER MEDIUM

GLM-701 Lacquer Thinner is a primer grade, medium drying lacquer thinner. This product is used for thinning lacquer primer when medium dry times are required. GLM-701 offers ideal flow and medium flash times when used in temperatures of 70-80 Fahrenheit. Available in quarts, gallons, 5 gallons and 55 gallons.



GLM-702

LACQUER THINNER SLOW

GLM-702 Lacquer Thinner is a primer grade, slow drying lacquer thinner. This product is used for thinning lacquer primer when slower dry times are required. GLM-702 offers ideal flow and slower flash times when used in temperatures of 80-90 Fahrenheit. Available in quarts, gallons, 5 gallons and 55 gallons.



GLM-703

LACQUER THINNER EXTRA SLOW

GLM-703 Lacquer Thinner is a primer grade, extra slow drying lacquer thinner. This product is used for thinning lacquer primer when slowest dry times are required. GLM-703 offers ideal flow and slowest flash times when used in temperatures in excess of 90 Fahrenheit. Available in quarts, gallons, 5 gallons and 55 gallons.